



MAPLE GROVE

SAFEGUARDING POLICY

LEAD DSL: Nicola Slawson

SAFEGUARDING GOVERNOR: Chris Groom

Contents

1.0	Policy statement	3
2.0	What is safeguarding and child protection?	3
3.0	Local Arrangements for the school	5
4.0	The role of Senior Managers and Governor	9
5.0	Designated Safeguarding Lead (DSL).....	10
6.0	Safeguarding Training and Updates for all staff	12
7.0	Roles and Responsibilities of Staff	13
8.0	Safer Recruitment.....	14
9.0	Early Help	14
10.0	Reporting concerns	15
11.0	Managing Referrals to DBS and professional bodies	16
12.0	Partnership working and sharing information.....	17
13.0	Peer on Peer Abuse.....	17
14.0	Bullying.....	19
15.0	Preventative Strategies.....	20
16.0	Online Safety.....	21
17.0	Children Missing Education	21
18.0	Child Sexual Exploitation (CSE) and Child Criminal Exploitation (CCE).....	22
19.0	Serious violence.....	23
20.0	Female Genital Mutilation	23
21.0	Preventing Radicalisation.....	24
22.0	Children Requiring Support with their Mental Health	24
23.0	Physical Interventions	24
24.0	Allegations against Staff	25
25.0	Working with the Local Authority Designated Officer (or equivalent)	26
26.0	Whistleblowing	26
27.0	Covid-19 and disruption to schools	27
28.0	Policy Review	30

1.0 Policy statement

Outcomes First Group is committed to ensuring that all of the people we support are effectively safeguarded in all services including fostering, schools and residential homes at all times. This policy applies to all children and young adults receiving education in our settings. It applies when working online and offline, in settings and in all virtual communications.

Safeguarding and child protection must always be the highest priority and at the forefront of everything we do. A whole school approach is required to ensure safeguarding and child protection are embedded in all decisions, planning, policy and day-to-day operations and activities.

It is essential that everybody working within the Outcomes First Group understands their safeguarding responsibilities. Governing bodies and proprietors must ensure that staff who work directly with children read and understand Part 1 of [KCSIE September 2022](#). Staff who do not work directly with children can read and understand either Part one or Annex A if it is more effective to enable them to safeguard and promote the welfare of children.

All Outcomes First Group employees working directly or indirectly with children **must** ensure that:

- children and young people feel safe and that they are listened to;
- they create an environment and culture in which children and young people feel valued;
- the best interests of the child are always considered and acted upon;
- safer recruitment procedures are rigorously followed (please refer to the Outcomes First Group Safer Recruitment Policy for further details);
- they understand their roles and responsibilities in keeping children and young people safe through ongoing learning, development and supervision;
- they are vigilant in monitoring possible signs of abuse including for those children and young people who have complex learning difficulties or specific communication needs, who may be particularly vulnerable;
- they maintain an attitude of **'it could happen here'**;
- they follow the appropriate procedures in place for sharing safeguarding concerns and that these are shared with relevant professionals in a timely manner;
- they understand and implement local safeguarding procedures as set out in local authority arrangements;
- children and young people have opportunity to learn about appropriate relationships with adults and recognise unacceptable behaviour by adults.
- they are aware that children can abuse other children (i.e. peer-on-peer abuse).
- there is a zero-tolerance approach to harassment, violence, abuse, inappropriate behaviour and bullying of any kind are not acceptable and will not be tolerated.

2.0 What is safeguarding and child protection?

2.1 Safeguarding

Safeguarding relates to the action taken to promote the welfare of children and young people to protect them from harm. This policy includes the safeguarding of young adult learners within Outcomes First Group schools and other settings and applies both offline and online.

2.2 Safeguarding is defined in Working Together to Safeguard Children (DfE, Sept 2018, updated Dec 2020) as:

- Protecting children from maltreatment;
- Preventing impairment of children's health and development;
- Ensuring that children grow up in circumstances consistent with the provision of safe and effective care; and
- Taking action to enable all children to have the best outcomes.

2.3 Outcomes First Group adopts a contextual safeguarding approach to safeguarding and child protection. Contextual safeguarding is: *'...an approach to understanding, and responding to, young people's experiences of significant harm beyond their families. It recognises that the different relationships that young people form in their neighbourhoods, schools and online can feature violence and abuse. Parents and carers have little influence over these contexts, and young people's experiences of extra-familial abuse can undermine parent-child relationships. Contextual Safeguarding, therefore, expands the objectives of child protection systems in recognition that young people are vulnerable to abuse in a range of social contexts.'* (Dr Carlene Firmin)

2.4 Child Protection

Child protection is an important aspect of safeguarding and promoting welfare. It refers to the activity that is undertaken to protect specific children who are suffering, or are likely to suffer, significant harm. Effective child protection is essential as part of wider work to safeguard and promote the welfare of children. However, all agencies and individuals should aim to proactively safeguard and promote the welfare of children so that the need for action to protect children from harm is reduced.

2.5 Safeguarding is everyone's responsibility

While local authorities and placing authorities have statutory responsibilities regarding safeguarding, Outcomes First Group believes that safeguarding is everyone's responsibility. The Group expects that staff keep the child or young person at the centre of all that they do and that any actions taken are in the best interests of the child. We also expect that children and young people are listened to and their voices are always heard. This is without exception and regardless of whether the child or young person is being cared for in a residential setting, foster home or being educated within school or remotely.

2.6 Defining Significant Harm/Child Abuse

'Children may be vulnerable to neglect and abuse or exploitation from within their family and from individuals they come across in their day-to-day lives. These threats can take a variety of different forms, including: sexual, physical and emotional abuse; neglect; exploitation by criminal gangs and organised crime groups; trafficking; online abuse; sexual exploitation and the influences of extremism leading to radicalisation. Whatever the form of abuse or neglect, practitioners should put the needs of children first when determining what action to take' (Working Together to Safeguard Children July 2018, updated Dec 2020)

2.7 The Children Act 1989 introduced the concept of 'Significant Harm' as the threshold that justifies compulsory intervention in family life in the best interests of children. Under Section 47 of the Act, local authorities have a duty to make enquiries to decide whether

they should take action to safeguard or promote the welfare of a child who is suffering or is likely to suffer Significant Harm.

2.8 Under s31(9) of the Children Act 1989 as amended by the Adoption and Children Act 2002:

'harm' means ill-treatment or the impairment of health or development, including for example, impairment suffered from seeing or hearing the ill-treatment of another;

'health' means physical or mental health; and

'ill-treatment' includes Sexual Abuse and forms of ill-treatment which are not physical.

Abuse or neglect is not always easy to identify; staff are more than likely to have some information but not the whole picture.

2.9 There are four defined categories of child abuse, which are deemed to be forms of 'Significant Harm':

- Neglect;
- Physical Abuse;
- Emotional Abuse;
- Sexual Abuse.

2.10 It is also important to be aware that:

- technology is a significant component in many safeguarding and wellbeing issues. Children are at risk of abuse online as well as face to face. In many cases abuse will take place concurrently via online channels and in daily life.
- that children can abuse other children (often referred to as peer-on-peer abuse). And that it can happen both inside and outside of school or college and online.

2.11 All staff must be aware of the signs and indicators of child abuse.

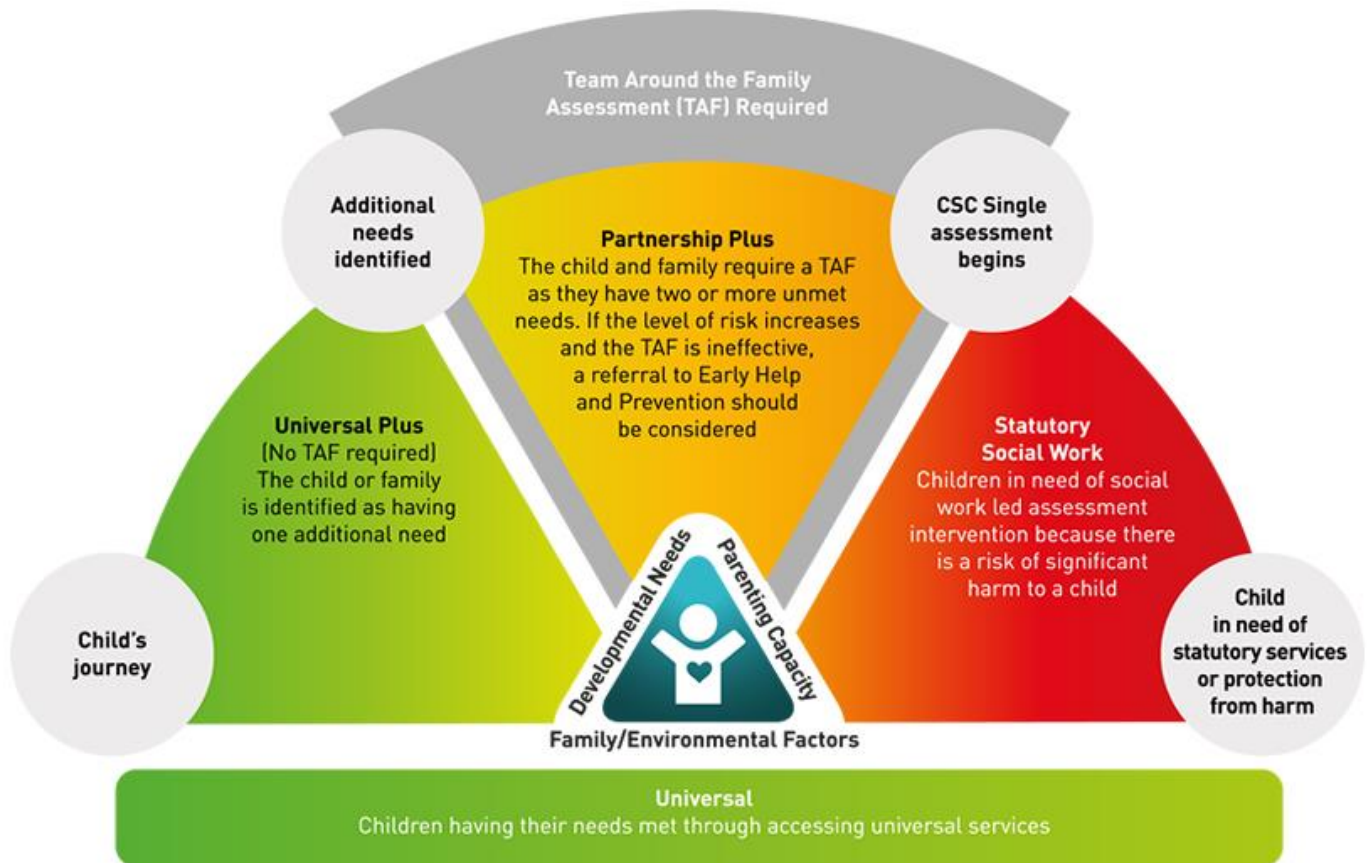
3.0 Local Arrangements for the school

3.1 All staff must be aware of the local arrangements for safeguarding relevant to the school in which they work;

3.2 The local arrangements forschool are as follows

3.3 Maple Grove School's safeguarding arrangements are in line with local safeguarding partnership arrangements. The West Cheshire safeguarding partnership consists of the three safeguarding partners (the local authority; a clinical commissioning group for an area within the local authority; and the chief officer of police for a police force in the local authority area)

3.4 The Local Authority Designated Officer (LADO) arrangements in Cheshire West and Chester are on a rotation basis, comprising Child Protection Chairs within the Safeguarding & Quality Assurance Unit. The contact email is safeguardinglado@cheshirewestandchester.gov.uk. Additional information can be found here: <https://www.cheshirewestscp.co.uk/wp-content/uploads/2019/03/Managing-Allegations-Procedure-March-2019.pdf>



3.10 Operation Encompass is a service offered by police forces across England, whereby schools may be contacted in the event of police attending domestic abuse incidents at the home of one of their pupils. The Teacher helpline in such circumstances is **0204 5139990**

3.11 The Outcomes First Group Head of Safeguarding can be contacted at: anne-marie.delaney@ofgl.co.uk

4.0 The role of Senior Managers and Governor

4.1 Governors must have oversight of safeguarding policies and procedures and ensure that they are being effectively implemented within the school and that training is effective. In line with KCSIE (September 2022), which states that; '*Governing bodies and proprietors should have a senior board level (or equivalent) lead to take **leadership** responsibility for their schools or college's safeguarding arrangements*'. The named Governor for the school is Ann Henderson.

4.2 Like teaching staff and volunteers, senior managers and Governors must be safely recruited and have all relevant checks on file. Please see the Group's Safer Recruitment Policy for further information.

- refer suspected cases of Child Sexual Exploitation and trafficking to the police;
- refer cases to the Disclosure and Barring Service after staff have been dismissed or there is suspected harm having been caused to children and young people;
- liaise with Outcomes First Group Quality Assurance Team and HR Team if any allegations or suspected harm having been caused to a child by an employee, supply staff or volunteer for Outcomes First group;
- ensure that the school complies with the work of the local safeguarding partnership.
- Ensure that all staff receive regular update training in relation to safeguarding;
- provide safeguarding updates to senior managers and school governors;
- ensure that there is effective monitoring and oversight of all safeguarding concerns;
- promoting the educational achievements of Looked After Children in line with the Children and Social Work Act 2017.

5.6 It is important that all staff understand the role of the DSL on their appointment within the school and as part of their induction. The DSL is responsible for ensuring that all staff understand their roles and responsibilities regarding safeguarding children and that a child focused approach is taken. The DSL will assess safeguarding concerns within the context of young people's environments. This is known as contextual safeguarding.

5.7 The DSL must ensure that clear, concise and good quality documents are kept of all allegations or safeguarding concerns. All concerns, discussions and decisions made, and the reasons for those decisions, should be recorded in writing. Information should be kept confidential and stored securely. It is good practice to keep concerns and referrals in a separate child protection file for each child. Records should include:

- a clear and comprehensive summary of the concern;
- details of how the concern was followed up and resolved;
- a note of any action taken, decisions reached and the outcome.

If in doubt about recording requirements, staff should discuss with the designated safeguarding lead (or deputy).

5.8 Data protection and GDPR are not barriers to record keeping or information sharing when promoting children's welfare. Schools and colleges have clear powers to share, hold and use information for these purposes. The school should have clear arrangements in place for the processes and principles for sharing information within the setting and other Outcomes First Group Divisions and with children's social care, the safeguarding partners, other organisations, agencies, and practitioners as required. Staff are required to be proactive in sharing information as soon as possible when it is in relation to a child's safety or wellbeing.

5.9 When young people move schools or move into further or higher education, the DSL is responsible for ensuring that the necessary information is shared with the new school or college. It is the DSL's responsibility to ensure that a pupil's child protection file is transferred to the new school or college as quickly as possible and as securely as possible. Confirmation of receipt must be obtained. **Files must be transferred securely.** Schools must inform their Local Authority of all deletions from their admission register when a child is taken off roll.

5.10 Consideration must be given to sharing information verbally with the new school or college prior to the child or young person leaving. The DSL must ensure that confidentiality of any

third parties is not breached and that they comply with GDPR. Records must contain factual information and must not be speculative. These documents must be kept confidential with the exception of sharing them with relevant professionals as part of safeguarding and protecting the child or young person. Records must be updated, and any actions must be followed up and completed. It is the responsibility of the DSL to ensure that a safe and satisfactory outcome has been reached and that all actions have been completed.

6.0 Safeguarding Training and Updates for all staff

6.1 Governing bodies and proprietors should ensure that, as part of the requirement for staff to undergo regular updated safeguarding training, including online safety, and the requirement to ensure children are taught about safeguarding, that safeguarding training for staff is integrated, aligned and considered as part of the whole school safeguarding approach and wider staff training and curriculum planning. They must regularly review the training programme to ensure that it includes all the required knowledge and that staff understand how it is to be implemented.

Whilst considering the above training requirements, governing bodies and proprietors should have regard to the Teachers' Standards which set out the expectation that all teachers manage behaviour effectively to ensure a good and safe educational environment and requires teachers to have a clear understanding of the needs of all pupils.

6.2 This policy **must** be read in conjunction with Keeping Children Safe in Education (September 2021). **All staff are expected to follow this policy and statutory guidance including KCSIE September 2022.**

6.3 All staff must read the following documents:

- Part 1 (or Annex A where appropriate) of [KCSIE September 2022](#)
- The school's Restrictive Physical Intervention Policy
- The school's Anti-bullying policy
- Outcomes First Group's Peer-on-peer abuse policy
- Outcomes First Group's Exploitation policy
- Outcomes First Group's Protecting Children from Radicalisation policy
- Outcomes First Group's Harmful Sexual Behaviours policy
- Outcomes First Group's Safer Recruitment policy
- Outcomes First Group's Data Protection policy
- Outcomes First Group's Web Filtering policy
- Outcomes First Group's Staying Safe Online
- The school's Whistle blowing and complaints policy
- The school's staff behaviour policy (Code of Conduct)
- The school's description and guidance of the role of the DSL
- The school's description and guidance of the role of the Deputy DSL
- [DfE guidance on sexual violence and harassment between children in schools and colleges](#)
- [DfE guidance on Children Missing in Education](#)
- [DfE guidance on Promoting the Education of Looked After Children](#)
- [DfE guidance on Teaching Online Safety in Schools](#)
- [DFE Guidance on Sharing nudes and semi-nudes advice for education settings working with children and young people](#)
- [DFE Guidance on Searching, Screening and Confiscation](#)

- is at risk of 'honour'-based abuse such as Female Genital Mutilation or Forced Marriage;
- is a privately fostered child;
- is persistently absent from education, including persistent absences for part of the school day.

9.4 Children's social care assessments should consider where children are being harmed in contexts outside the home, so it is important that schools provide as much information as possible as part of the referral process. This will allow any assessment to consider all the available evidence and enable a contextual approach to address such harm

9.5 When a child or young person has been referred for Early Help, it is the responsibility of the DSL to set up an inter-agency assessment as appropriate. Staff may be required to support other agencies and professionals in an early help assessment, in some cases acting as the lead professional. Any such cases should be kept under constant review and consideration must be given to a referral to children's social care for assessment for statutory services, if the child's situation does not appear to be improving or is getting worse.

10.0 Reporting concerns

10.1 What to do if a child or young person discloses

Systems should be in place (and they should be well promoted, easily understood and easily accessible) for children to confidently report abuse, sexual violence and sexual harassment, knowing their concerns will be treated seriously, and that they can safely express their views and give feedback.

If a child or young person discloses information to a member of staff, they must ensure that they:

- listen to the child or young person and reassure them they are being taken seriously and that they will be supported and kept safe.
- never give them the impression that they are creating a problem by reporting abuse, sexual violence or sexual harassment. They must never be made to feel ashamed for making a report.
- do not dismiss what the child or young person tells them. All concerns must be acted upon rigorously;
- do not promise to keep it a secret. The member of staff must explain that they have a duty to share information to keep them safe and protect them;
- write down what the child or young person tells them. This must be accurate and in the child's words;
- immediately report the concerns to the DSL or deputy. If neither is available, the member of staff must report the information to the Head Teacher, Principal or Regional Director for Education and Care;

10.2 Staff must be alert to not just potential familial abuse and allegations, but also to children and young people making allegations against staff, volunteers or peers. In these situations the Group's Managing Allegation Procedures must be followed. (See Section 24 for further details)

and plain for all to see. It can be subtle and insidious. Bullying can become part of the culture, recognised or believed by all or a significant number of people as 'acceptable'.

- 14.2** Outcomes First Group has a zero-tolerance approach to bullying. All staff have a responsibility to challenge all bullying. Staff must help children and young people to understand what bullying is and how to report it. Bullying must be dealt with as a safeguarding matter. Staff must report any bullying concerns to the DSL **on the same day**. The concerns must be documented appropriately.
- 14.3** Schools have a responsibility to ensure that those children and young people who bully, are supported and helped to understand the impact of their actions.

The government has produced the following guidance on Preventing and tackling bullying, mental health and behaviour in school:

<https://www.gov.uk/government/publications/preventing-and-tackling-bullying>

See [Rise Above](#) for links to materials and lesson plans

- 14.4** For further information please refer to the school's anti-bullying policy, child protection policy, the Web Filtering policy, and the DfE guidance [Sexual violence and sexual harassment between children in schools and colleges](#) (Sept 2021)

- 14.5 All staff have a responsibility to report any suspicions or concerns that a child has or may be mistreated or harmed.**

15.0 Preventative Strategies

- 15.1** The school will take all appropriate action to ensure that children and young people learn about appropriate relationships with adults, keeping safe, online safety as well as sex and healthy relationships. Relationship, Health and Sex Education (RSHE) lessons, Relationships Education, and Relationships and Sex Education will focus on important age-appropriate issues in line with Government guidance. Staff must ensure that children and young people have opportunity to learn about safe relationships between peers as well as who they can talk to if they have any concerns.

A one-stop page providing teachers with support in teaching RSHE topics can be found here: <https://www.gov.uk/guidance/teaching-about-relationships-sex-and-health>

- 15.2** Children should be supported by staff to understand what abuse is. Children must be listened to and enabled to report any abuse or neglect at the earliest opportunity. They should be given information about how to report abuse or any concerns about possible abuse. This should include being able to access in private, relevant websites or help lines such as Childline to seek advice and help.
- 15.3** The school recognises that some children and young people are more vulnerable by virtue of their complex health or behavioural needs, or disabilities. In these instances, all staff have a responsibility to be the 'eyes and ears' and report all concerns to the DS Lead.
- 15.4** For further information, refer to Part 5 of Keeping Children Safe in Education (September 2021) 'Child on Child Sexual Violence and Sexual Harassment'.

Early identification and intervention is a priority. Schools must have appropriate procedures in place for monitoring the attendance of children and young people in school. Attendance must be monitored through Senior Leadership Team Meetings and Governance.

- 17.2** The DSL must contact the main emergency contact as detailed on the pupil's file should there be concerns regarding the pupil missing education.

Staff must report all unauthorised absences to the DSL, who must make contact with the child or young person's parent/carer immediately to establish the child or young person's whereabouts. The DSL must inform the placing authority of a pupil's poor attendance.

- 17.3** The DSL is responsible for investigating any unexplained absences. Reasonable enquiries must be made to locate a child or young person who is missing from education. The DSL **must** refer any safeguarding concerns regarding the absence of a pupil to the local authority. Cases where there are concerns regarding forced marriage or FGM must be referred to the police immediately. All information **must** be documented appropriately.

- 17.4** Children and young people who are repeatedly missing from education are at particular risk of harm. Attempts must be made to talk to the child or young person about why they are missing from education. Records must be kept of those discussions. Any safeguarding information which the child or young person discloses must be shared **immediately** with the local authority. If the child or young person discloses immediate safeguarding concerns, the DSL must share this information with the police.

18.0 Child Sexual Exploitation (CSE) and Child Criminal Exploitation (CCE)

- 18.1** Exploitation of children and young people is a form of child abuse and can include sexual exploitation or criminal exploitation. This occurs when an individual or group takes advantage of an imbalance in power to coerce, manipulate or deceive a child into taking part in sexual or criminal activity, in exchange for something the victim needs or wants, and /or for financial advantage or increased status of the perpetrator or facilitator and/or through violence or the threat of violence.

- 18.2** CSE and CCE can affect children, both male and female and can include children who have been moved (commonly referred to as trafficking) for the purpose of exploitation. It is important to note that the experience of girls who are criminally exploited can be very different to that of boys. The indicators may not be the same, however professionals should be aware that both boys and girls can be at risk of criminal exploitation. Both boys and girls being criminally exploited may be at higher risk of sexual exploitation.

- 18.3** Schools must write and implement a local exploitation procedure which staff must be familiar with. All staff **must** read Outcomes First Group's Exploitation policy as well as refer to Keeping Children Safe in Education (September 2021).

- 18.4** All staff **must** know the definitions, signs and indicators of CSE, CCE and County Lines. DSL must provide ongoing training and learning to staff around exploitation. All staff **must** have training in exploitation.

- 18.5** Staff **must** report any concerns regarding exploitation **immediately** to the DSL and document their concerns appropriately **on the same day**. Where there are immediate concerns relating to children and young people's safety due to exploitation, DSLs must

make a same day referral to the local authority and report the concerns to the police as well as to the Regional Director for Education and Care.

- 18.6** Where there are low level concerns, i.e. where the behaviour towards a child does not meet the threshold of harm, the DSL must document the concerns on a chronology in order to establish a full picture of what is happening for the child or young person.

A low-level concern is any concern, no matter how small, and even if no more than causing a sense of unease or a 'nagging doubt', that an adult working in or on behalf of the school may have acted in a way that is inconsistent with the staff code of conduct, including inappropriate conduct outside of work, but does not meet the allegations threshold or is not considered serious enough to consider a referral to the Local Authority Designated Officer or equivalent. Examples may include but are not limited to: being over friendly with children; having favourites; engaging with a child on a one-to-one basis in a secluded area or behind a closed door; or using inappropriate sexualised, intimidating or offensive language.

- 18.7** It is everyone's responsibility to help children and young people know about grooming and exploitation. Schools must ensure that children and young people know who to talk to if they have any concerns for themselves or other children.

19.0 Serious violence

- 19.1** All staff should be aware of indicators, which may signal children are at risk from, or are involved with serious violent crime. These may include increased absence from school, a change in friendships or relationships with older individuals or groups, a significant decline in performance, signs of self-harm or a significant change in wellbeing, or signs of assault or unexplained injuries. Unexplained gifts or new possessions could also indicate that children have been approached by, or are involved with, individuals associated with criminal networks or gangs and may be at risk of criminal exploitation.

- 19.2** All staff should be aware of the range of risk factors which increase the likelihood of involvement in serious violence, such as being male, having been frequently absent or permanently excluded from school, having experienced child maltreatment and having been involved in offending, such as theft or robbery.

Further guidance for professionals can be found here:

<https://www.gov.uk/government/publications/advice-to-schools-and-colleges-on-gangs-and-youth-violence>

<https://www.gov.uk/government/publications/criminal-exploitation-of-children-and-vulnerable-adults-county-lines>

20.0 Female Genital Mutilation

- 20.1** In line with KCSIE (September 2022), teachers have a legal duty to share concerns regarding FGM; 'If a **teacher**, in the course of their work in the profession, discovers that an act of FGM appears to have been carried out on a girl under the age of 18, the teacher **must** report this to the police'. In suspected cases of FGM, staff must refer to the local authority as well as the police. The DSL will assist and support staff with this.

Arrangements for reporting and accessing electronic and paper record keeping systems must be in place. If a member of the team is unable to attend work due to self-isolation, they may be able to continue to function as part of the DSL team remotely with this access. Sensitive or confidential case-related information must not be removed from the school to take to another location for remote working. Consider other mechanisms to access the information securely.

27.5. Practice Guidance

Many of the children and young people we educate have EHC plans and may remain in school. It is important that each individual child's circumstances are considered, and it should not be assumed that all children with EHC plans should be in school regardless of circumstance. Decisions should be based on the child's best interests. Arrangements need to be communicated clearly with parents and carers.

The following steps should be taken to agree a plan in respect of individual pupils:

- A risk assessment must be undertaken for each child. This should consider any health-related vulnerabilities of the child or members of their household (if known), any specific online risks and any child protection concerns.
- For every child with an allocated social worker, the most suitable course of action in the circumstance should be agreed with both the placing authority or local authority and/or their parent or carer. The rationale for the decision, the people involved in the decision-making, and the date and time of the discussion should be recorded clearly on the child's record.
- For any children subject to child protection plans, the local authority has a duty to remain in contact and see the child at least every 10 working days. Arrangements must be made to enable this to happen. As a key agency in the child's life, the school will commit to maintain contact with them. How this done is a matter for individual consideration.
- For children in need (As defined in section 17 of The Children Act 2004) we should recognise that these families require support, and the local authority has an obligation to provide that. You should ask the allocated social worker what the arrangements will be to support the child and family and what their expectations are of the school. The outcome of this discussion must be recorded.
- For any child or young person receiving early help services or subject to non-statutory multi agency plans. The manager or allocated worker for that child must be contacted by the school to establish how regularly the child will be seen and what the expectations are of the school to maintain contact with that child or provide support for the family.
- Each head/principal must inform the placing local authority if a child will be accessing off-site education. Ensure a record of the communication and any response received from the local authority is held at the school.

