



**MAPLE
GROVE**

SAFEGUARDING POLICY

LEAD DSL: Ben Reading (Headteacher)

SAFEGUARDING GOVERNOR: James Joyce

1. Policy statement

- 1.1** Outcomes First Group is committed to ensuring that children and young people are effectively safeguarded in all services including fostering, schools and residential homes at all times. This policy applies when working online and offline, in settings and in all virtual communications.
- 1.2** All Outcomes First Group employees **must** ensure that:
- they are familiar with Part 1 of Keeping Children Safe in Education (2020) and the January 2021 Update;
 - children and young people feel safe and that they are listened to;
 - they create an environment in which children and young people feel valued;
 - safer recruitment procedures are rigorously followed (please refer to the Outcomes First Group Safer Recruitment Policy for further details);
 - they understand their roles and responsibilities in keeping children and young people safe through ongoing learning, development and supervision;
 - they are vigilant in monitoring possible signs of abuse including for those children and young people who have complex learning difficulties or specific communication needs;
 - they follow the appropriate procedures in place for sharing safeguarding concerns and that these are shared with relevant professionals in a timely manner;
 - they understand and implement local safeguarding procedures as set out in local authority arrangements;
 - children and young people have opportunity to learn about appropriate relationships with adults and recognise unacceptable behaviour by adults.

2. What is safeguarding and child protection?

2.1 Safeguarding

Safeguarding relates to the action taken to promote the welfare of children and young people to protect them from harm. This policy includes the safeguarding of young adult learners within Outcomes First Group schools and other settings, both offline and online.

Guidance has been developed to assist educational senior leadership teams to give full consideration to safeguarding matters as part of managing the changes and challenges during the Covid-19 outbreak. The guidance is attached at Appendix 1: Covid-19 Safeguarding Practice Guidance for Educational Settings.

2.2 Safeguarding is defined in Working Together to Safeguard Children (DfE, Sept 2018) as:

- Protecting children from maltreatment;
- Preventing impairment of children's health and development;
- Ensuring that children grow up in circumstances consistent with the provision of safe and effective care; and
- Taking action to enable all children to have the best outcomes.

2.3 Outcomes First Group adopts a contextual safeguarding approach to safeguarding and child protection. Contextual safeguarding is: *'...an approach to understanding, and responding to, young people's experiences of significant harm beyond their families. It recognises that the different relationships that young people form in their neighbourhoods, schools and online can feature violence and abuse. Parents and carers have little influence over these contexts, and young people's experiences of extra-familial abuse can undermine parent-child relationships. Contextual Safeguarding, therefore, expands the objectives of child*

protection systems in recognition that young people are vulnerable to abuse in a range of social contexts. '(Dr Carlene Firmin)

2.4 Child Protection

Child protection is an important aspect of safeguarding and promoting welfare. It refers to the activity that is undertaken to protect specific children who are suffering, or are likely to suffer, significant harm. Effective child protection is essential as part of wider work to safeguard and promote the welfare of children. However, all agencies and individuals should aim to proactively safeguard and promote the welfare of children so that the need for action to protect children from harm is reduced.

2.5 Safeguarding is everyone's responsibility

While local authorities and placing authorities have statutory responsibilities regarding safeguarding, Outcomes First Group believes that safeguarding is everyone's responsibility. Outcomes First Group expects that staff keep the child or young person at the centre of all that they do and that any actions taken are in the best interests of the child. We also expect that children and young people are listened to and their voices are always heard. This is without exception and regardless of whether the child or young person is being cared for in a residential setting, foster home or being educated within school.

2.6 Defining Significant Harm/Child Abuse

'Children may be vulnerable to neglect and abuse or exploitation from within their family and from individuals they come across in their day-to-day lives. These threats can take a variety of different forms, including: sexual, physical and emotional abuse; neglect; exploitation by criminal gangs and organised crime groups; trafficking; online abuse; sexual exploitation and the influences of extremism leading to radicalisation. Whatever the form of abuse or neglect, practitioners should put the needs of children first when determining what action to take' (Working Together to Safeguard Children July 2018)

2.7 The Children Act 1989 introduced the concept of 'Significant Harm' as the threshold that justifies compulsory intervention in family life in the best interests of children. Under Section 47 of the Act, local authorities have a duty to make enquiries to decide whether they should take action to safeguard or promote the welfare of a child who is suffering, or is likely to suffer Significant Harm.

2.8 Under s31(9) of the Children Act 1989 as amended by the Adoption and Children Act 2002:

'**harm**' means ill-treatment or the impairment of health or development, including for example, impairment suffered from seeing or hearing the ill-treatment of another;

'**health**' means physical or mental health; and

'**ill-treatment**' includes Sexual Abuse and forms of ill-treatment which are not physical. Abuse or neglect is not always easy to identify; staff are more than likely to have some information but not the whole picture.

2.9 There are four defined categories of child abuse, which are deemed to be forms of 'Significant Harm':

- Neglect;
- Physical Abuse;
- Emotional Abuse;
- Sexual Abuse.

2.10 All staff must be aware of the signs and indicators of child abuse.

3. Local Arrangements for the school

- 3.1** All staff must be aware of the local arrangements for safeguarding relevant to the school in which they work;
- 3.2** The local arrangements for Maple Grove school are as follows
- 3.3** Maple Grove School's safeguarding arrangements are in line with local safeguarding partnership arrangements. The local safeguarding partnership consists of the three safeguarding partners (the local authority; a clinical commissioning group for an area within the local authority; and the chief officer of police for a police force in the local authority area).
- 3.4** The Local Authority Designated Officer (LADO) arrangements in Cheshire West and Chester are on a rotation basis, comprising Child Protection Chairs within the Safeguarding & Quality Assurance Unit. The contact email is safeguardinglado@cheshirewestandchester.gov.uk. Additional information can be found here: <https://www.cheshirewestscp.co.uk/wp-content/uploads/2019/03/Managing-Allegations-Procedure-March-2019.pdf>
- 3.5** All safeguarding referrals must be reported to the local authority, via the Integrated Access and referral Team (i-Art@cheshirewestandchester.gov.uk), or the Emergency Duty Team (out of hours) on 0845 4580000
- 3.6** The local authority safeguarding referral procedure is now part of the Pan-Cheshire Multi-Agency Safeguarding Children Procedures. Local procedures are outlined below:

Report

If you have concerns about a child's welfare, or feel that they may be being abused or neglected, please call the Integrated Access and Referral Team (i-ART) or the Emergency Duty Team (EDT) for help and advice.

<p>Office hours: 0300 123 7047</p> <ul style="list-style-type: none">• 8.30am – 5pm (Monday – Thursday)• 8.30am – 4.30pm (Friday)	<p>EDT Out of hours: 01244 977 277</p> <ul style="list-style-type: none">• 4.30pm – 8.30am (Monday – Thursday)• From 4pm (Friday)• 24 hours weekends and bank holidays	<p>or Cheshire Police: 0845 458 0000 (999 in an emergency)</p>
---	---	---

Integrated access and referral team (iART)

- Email (secure): i-ART@cheshirewestandchester.gcsx.gov.uk
- Email (ordinary): i-ART@cheshirewestandchester.gov.uk
- Opening hours: 8.30am to 5pm from Monday to Thursday, 8.30am to 4.30pm Friday
- Telephone: 0300 123 7047

Purpose of iART:

The reviewed iART criteria aligns with the well-established Cheshire West and Chester Continuum of Need and outlines the role of the Integrated Access and Referral Team (iART) as follows:

1. To receive evidence based referrals for children in need of social work led intervention because there is a risk of significant harm to a child.
2. To provide advice on request for cases at Partnership Plus on the continuum of need where a TAF is not achieving outcomes or the case is on the point of escalating to enable a package of support from Early Help and Prevention Service (formerly IES).
3. To receive and respond to statutory notifications.

This means that in the absence of an LSCB endorsed early help assessment (Team Around the Family being recommended and progressed) and an evidenced based referral which is supported by the use of an evidence based assessment tool, contacts will not be accepted into iART, with the exception of those that clearly meet threshold for statutory social work intervention.

The expectation is that professionals work with families to offer evidence based early support at the earliest possible time.

Emergency duty team (for out of hours emergencies)

- Email (ordinary): edt@cheshirewestandchester.gov.uk
- Telephone: 01244 977277
- Opening hours: 4.30 pm to 8.30 am from Monday to Thursday, from 4pm on Friday and 24 hours at weekends and bank holidays

Please note, the link to the Multi-agency referral form goes directly through to the iART team during working hours and will not be picked up by the Emergency Duty Team.

Important notes

Emergency referrals should be telephoned through to the above numbers as appropriate.

Do not send any personal information about specific children or young people via the ordinary email addresses provided above but please ensure you use the electronic Multi-Agency Referral Form to send details of your referral.

As a professional contacting iART you have a responsibility to secure consent from families and/or individuals to confirm they are happy for their information to be shared. The law is clear consent must be specific, informed and freely given. On contacting iART a member of the team will explore this with you. There are some exceptions to this, for example if someone is at significant risk or to prevent crime and disorder. Please contact iART for advice if you are unsure.

The Council privacy notice provides information about how agencies in West Cheshire may use personal information. All agencies have to tell people how they might use information provided and give the choice to say yes or no to using that information. Professionals must share a copy of the [privacy notice](#) at every first visit and record this on eTAF.

Making a referral

- [Online referral form for Integrated Access and Referral Team](#)

Professionals making a referral online must observe the following guidance:

- As many fields as possible should be completed. Some fields must be completed in order for the referral to proceed. The name, address and contact details of the person making the referral must be included

Please note that the Multi-Agency Referral form will confirm whether you are a referring professional or a member of the public.

- Online referrals are checked throughout the day on weekdays. The team aim to assess each referral within 1 working day and will respond on a priority basis. The Integrated Access and Referral Team (iART) will decide whether threshold is met to progress the referral either to Children's Social Care for a statutory social work assessment or to Early Help and Prevention, or whether threshold has not been met for the referral to progress and provide other information/advice/guidance.
- Individuals have a right by law to view records held about them. It is exceptional that information is withheld from a service user and this should be borne in mind when making an online referral. Please refer to the [privacy notice](#) for more information.

Please note the above reference to the continuum of need and the purpose of iART as the integrated front door for Children's Social Care and Early Help and Prevention.

What happens next?

Online referrals will only be acknowledged where the referrer is the person concerned, the carer or a professional such as a GP, teacher or nurse. A decision as to next steps will be completed wherever possible within 1 working day.

Further information

Further information can be found on the West Cheshire Local Safeguarding Children Board website.

- [Local Safeguarding Children Board](#)

3.7 Referrals regarding radicalisation: staff should remain alert to the risks of extremism and radicalisation, and report any suspicions to the police:

Email: CTPNW.Merseyside@merseyside.pnn.police.uk

Telephone: [01606 365986](tel:01606365986)

Documents

[Prevent referral and assessment form \(Word, 34KB\)](#)

[Risk of Radicalisation Strategy \(PDF, 2MB\)](#)

[Channel awareness leaflet \(PDF, 673KB\)](#)

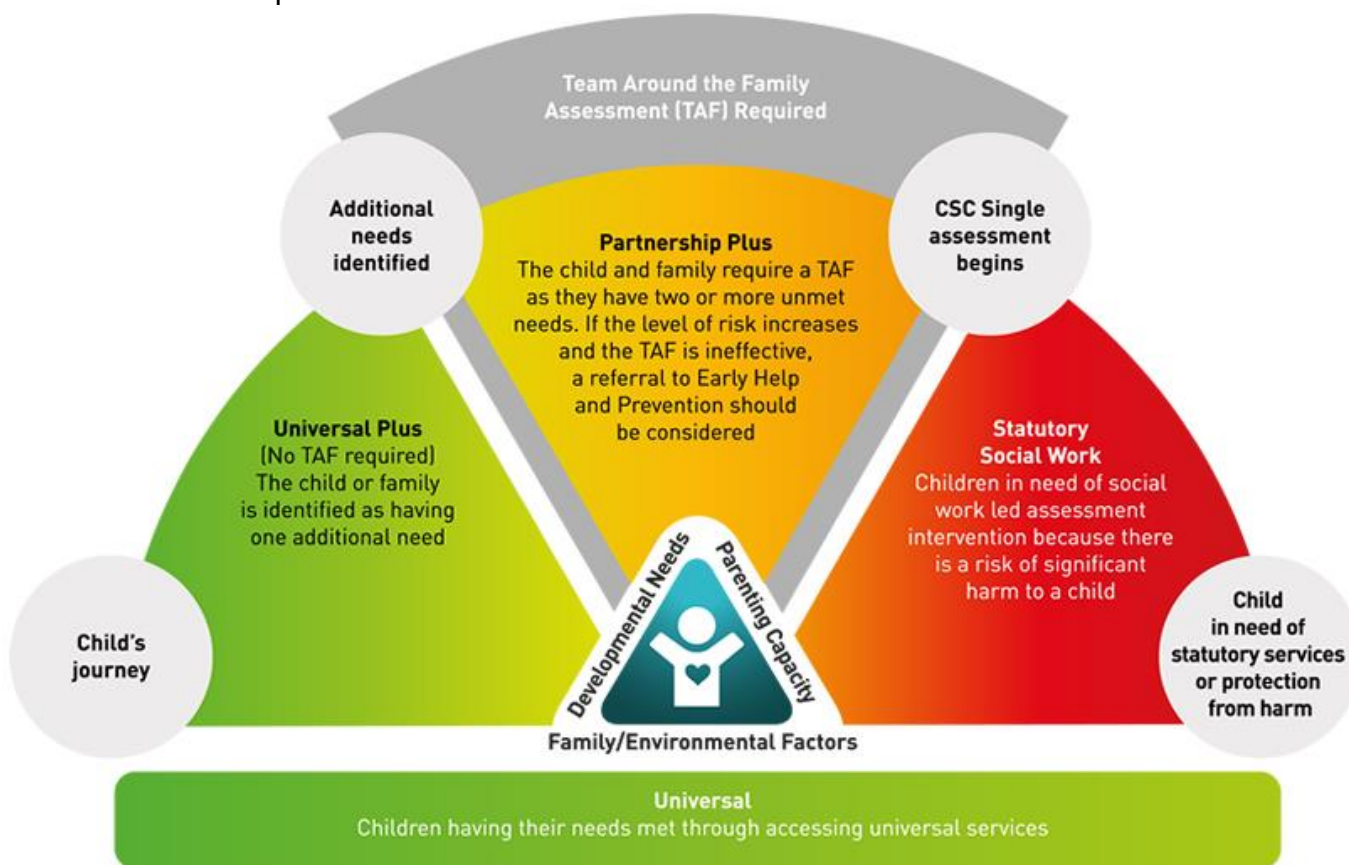
3.8 For all referrals regarding child exploitation, staff (DSL) should complete the CWaC Safeguarding Children Partnership's Child Exploitation Screening Tool

This single Child Exploitation tool should be used in any instance where you are concerned that a child is being exploited, through sexual or criminal means. The tool should help you to identify and evaluate the cause of your concerns and reflect on whether further safeguarding investigations are needed. The tool should also be used to evidence improvement when professionals are working with a child and risk is assessed to be reduced. It can be used with parents, young people and other professionals. From the **1st October 2018** this new tool is the only one that should be used.

[Child Exploitation Assessment Tool Dec 2019](#) Children at risk of significant harm or in need of protection must be referred to i-ART and Children's Social Care. **The CE Screening Tool should be submitted alongside the Multi-Agency Referral Form (MARF) to i-ART.**

As with all tools, they are most useful when they support best practice. Here is an example of a good quality completed tool.

3.9 The local authority procedure for an early help referral is to follow the 'Continuum of Need', and contact i-Art if required



3.10 The Chair of Governors (and Safeguarding Governor) for Maple Grove School is: James Joyce

3.11 The Outcomes First Group Head of Safeguarding can be contacted at safeguarding@ofgl.co.uk

4. Safeguarding Training and Updates

4.1 This policy **must** be read in conjunction with Keeping Children Safe in Education (2020). **All staff are expected to follow this policy and statutory guidance including KCSIE 2020 and the January 2021 Update.**

4.2 This policy is written so as not to replicate information contained within KCSIE part 1 (2020).

4.3 All staff must read the following documents:

- Part 1 of KCSIE (2020)
- The school's Restrictive Physical Intervention Policy

- The school's Anti-bullying policy
- Outcomes First Group's Exploitation policy
- Outcomes First Group's Protecting Children from Radicalisation policy
- Outcomes First Group's Harmful Sexual Behaviours policy
- Outcomes First Group's Safer Recruitment policy
- Outcomes First Group's Data Protection policy
- Outcomes First Group's Web Filtering policy
- The school's Whistle blowing and complaints policy
- The school's staff behaviour policy (Code of Conduct)
- The school's description and guidance of the role of the Designated Safeguarding Lead
- The school's description and guidance of the role of the Deputy Designated Safeguarding Lead
- DfE guidance on sexual violence and harassment between children in schools and colleges
- DfE guidance on children missing in education
- DfE guidance on Promoting the Education of Looked After Children
- DfE guidance on Teaching Online Safety in Schools

4.4 Safeguarding updates must be regularly provided to staff, either through face to face training, meetings or through regular written updates.

- **Face to face safeguarding training must be provided (and recorded) to all staff at least annually.**
- **Designated Safeguarding Leads must refresh their advanced training at least every two years.**

4.5 All members of school leadership teams, including the Head Teacher and designated safeguarding lead should also be familiar with Working Together to Safeguard Children 2018.

5. Partnership working and sharing information

5.1 Partnership working and the sharing of information is key in keeping children safe. Everyone who has a role to play in caring for children has a duty to share good quality information with the relevant professionals in a timely manner.

5.2 General Data Protection Regulations

All schools must ensure that they comply with the Outcomes First Group's Data Protection policy which incorporates the GDPR requirements. The GDPR works around the principles of consent and assumes the automatic right of privacy to all individuals. This applies to children and young people's personal information, as well as that of staff and parents/carer's.

5.3 All staff must complete the GDPR training. All staff have a responsibility to ensure that they comply with the GDPR requirements.

5.4 Schools must ensure that they inform pupils, parents and carers of how their personal information will be stored and used.

5.5 The GDPR is not a barrier to sharing safeguarding information. Safeguarding concerns must always be passed on. It is not necessary to seek consent to share information for the purposes of safeguarding and promoting the welfare of a child provided that there is a lawful basis to process any personal information required.

- 5.6** Schools must ensure that they hold emergency contact details of the parents/carers of pupils. This is to be done with the agreement of the parents/carers. In line with KCSIE (2020) schools must hold more than one set of contact details for pupils. Data breaches must be reported immediately to the Data Protection manager as set out in the Data Protection Policy.

6. Designated Safeguarding Lead

- 6.1** *'Governing bodies and proprietors should ensure an appropriate senior member of staff, from the school or college leadership team, is appointed to the role of designated safeguarding lead. The designated safeguarding lead should take lead responsibility for safeguarding and child protection. This should be explicit in the role-holder's job description.'* (KCSIE 2020)
- 6.2** The Head Teacher must appoint one individual to be the lead Designated Safeguarding Lead, and make arrangements for there to be deputy Designated Safeguarding Leads in place who will manage any immediate safeguarding incidents in the Designated Safeguarding Lead's absence. The Designated Safeguarding Lead (and deputies) will receive DSL training every two years.
- 6.3** The Head Teacher must ensure that job descriptions for Designated Safeguarding Leads and Deputy Designated Safeguarding Leads are kept on personnel files and clearly state their responsibilities.
- 6.4** The DSL (or deputy) must always be available during school hours for staff to discuss any concerns. The DSL must be an appropriate senior member of the leadership team.
- 6.5** **The main responsibilities of the Designated Safeguarding Lead are to:**
- provide support to staff regarding safeguarding concerns;
 - lead on advising staff of any action to be taken due to a safeguarding concern;
 - ensure that children and young people are immediately safeguarded from harm and abuse;
 - ensure that there is appropriate cover during their absence, and that staff know who to approach if the Designated Safeguarding Lead is unavailable;
 - liaise with local authorities and other professionals, sharing information and fully assisting with any enquiries;
 - adopt a child focused and holistic approach to deciding on further action;
 - refer allegations to the Local Authority Designated Officer;
 - refer safeguarding concerns to placing and host local authorities;
 - refer suspected cases of radicalisation to Channel;
 - refer suspected case of Female Genital Mutilation to the police;
 - refer suspected cases of Child Sexual Exploitation and trafficking to the police;
 - refer cases to the Disclosure and Barring Service after staff have been dismissed or there is suspected harm having been caused to children and young people;
 - liaise with Outcomes First Group Quality Assurance Team and HR Team of any allegations or suspected harm having been caused to a child by an employee, supply staff or volunteer of or for Outcomes First group;
 - ensure that the school complies with the work of the local safeguarding partnership.
 - Ensure that all staff receive regular update training in relation to safeguarding;
 - provide safeguarding updates to senior managers and school governors;
 - ensure that there is effective monitoring and oversight of all safeguarding concerns;

- promoting the educational achievements of Looked After Children in line with the Children and Social Work Act 2017.

- 6.5** It is important that all staff understand the role of the Designated Safeguarding Lead on their appointment within the school and as part of their induction. The Designated Safeguarding Lead is responsible for ensuring that all staff understand their roles and responsibilities regarding safeguarding children and that a child focused approach is taken. The Designated Safeguarding Lead will assess safeguarding concerns within the context of young people's environments. This is known as contextual safeguarding. The Designated Safeguarding Lead must ensure that clear, concise and good quality documents are kept of all allegations or safeguarding concerns. Data protection is not a barrier to record keeping or information sharing.
- 6.6** When young people move schools or move into further or higher education, the Designated Safeguarding Lead is responsible for ensuring that the necessary information is shared with the new school or college. It is the Designated Safeguarding Lead's responsibility to ensure that a pupil's child protection file is transferred to the new school or college as quickly as possible and as securely as possible. Confirmation of receipt must be obtained. **Files must be transferred securely.**
- 6.7** Consideration must be given to sharing information verbally with the new school or college prior to the child or young person leaving. The Designated Safeguarding Lead must ensure that confidentiality of any third parties is not breached and that they comply with GDPR. Records must contain factual information and must not be speculative. These documents must be kept confidential with the exception of sharing them with relevant professionals as part of safeguarding and protecting the child or young person. Records must be updated and any actions must be followed up and completed. It is the responsibility of the Designated Safeguarding Lead to ensure that a safe and satisfactory outcome has been reached and that all actions have been completed.

7. Roles and Responsibilities of Staff

- 7.1** Outcomes First Group recognises that it is not just one person's role to safeguard children but that it requires a collective response to safeguarding. All Outcomes First group employees must understand their roles and responsibilities regarding keeping children safe and reporting concerns.
- 7.2** During staff induction, staff will receive safeguarding training. Staff must be familiar and understand the role of the Designated Safeguarding Lead, the local safeguarding partnership and the individual systems relating to safeguarding within the school. Staff must also know, understand and implement the school's behaviour management policy, the child protection policy, the school's code of conduct, the safeguarding response to children who go missing from education and Keeping Children Safe in Education 2020, Part 1.
- 7.3 Staff are responsible for:**
- compliance with Outcomes First Group policies, statutory guidance and legislation including Keeping Children Safe in Education (2020) and Working Together to Safeguard Children (2018);
 - understanding the role of the Designated Safeguarding Lead;
 - helping to develop and deliver a curriculum which helps children and young people to understand about abuse, appropriate and safe relationships with adults and peers, and keeping safe both online and offline;

- helping to provide an environment where children and young people feel safe and valued;
- attending training and meetings;
- ensuring that they fully understand how to report concerns and if not, asking for further training and support;
- understand the safeguarding response to children who go missing from education;
- listening to children and young people;
- supporting children and young people if they disclose safeguarding information;
- ensuring that they are alert to signs of abuse by peers or adults;
- ensuring that they are aware of indicators or possible signs of neglect;
- ensuring that they closely monitor any possible signs of abuse or harm for those children who are unable to communicate verbally or who have complex health and care needs;
- keeping sensitive information confidential and sharing it only with those professionals for whom it is relevant;
- helping to identify those children or young people who may benefit from Early Help;
- helping to implement Child Protection Plans.

7.4 Staff are in a close position to children and young people within schools as they know the children and young people. They have regular contact with them and so are in the best position to know if a child or young person is behaving in a way which could possibly indicate that they are being hurt or harmed. Any concerns, whether these are nagging doubts, worries, concerns or based on information told to them, must be reported **immediately** to the Designated Safeguarding Lead both verbally and in writing. **It is the staff member's responsibility to ensure that this information is acted upon. They have a duty to follow up with the Designated Safeguarding Lead to ensure that action has been taken.**

7.5 Early Help

'A child in need is defined under the Children Act 1989 as a child who is unlikely to achieve or maintain a reasonable level of health or development, or whose health and development is likely to be significantly or further impaired, without the provision of services; or a child who is disabled. Local authorities are required to provide services for children in need for the purposes of safeguarding and promoting their welfare. Children in need may be assessed under section 17 of the Children Act 1989' (KCSIE 2020)

7.6 It is important that staff take swift and effective action to safeguard children and young people and to stop concerns from escalating. It may be that some children and young people will benefit from Early Help.

7.7 Staff must be aware and alert to the possibility of Early Help being needed for those children and young people who have particular vulnerabilities, such as those who:

- are disabled or who have specific additional needs;
- have special educational needs (whether or not they have a statutory education, health and care plan);
- are young carers;
- are showing signs of being drawn in to anti-social or criminal behaviour, including gang involvement and association with organised crime groups;
- are frequently missing/going missing from care or from home;
- are misusing drugs or alcohol themselves;
- are at risk of modern slavery, trafficking or exploitation;
- are in a family circumstance presenting challenges for the child, such as substance abuse, adult mental health problems or domestic abuse, including controlling or coercive behaviour;

- have returned home to their family from care;
- are showing early signs of abuse and/or neglect;
- are at risk of being radicalised or exploited;
- are a privately fostered child.

7.8 When a child or young person has been referred for Early Help, it is the responsibility of the Designated Safeguarding Lead to set up an inter-agency assessment as appropriate. Staff may be required to support other agencies and professionals in an early help assessment, in some cases acting as the lead professional. Any such cases should be kept under constant review and consideration must be given to a referral to children's social care for assessment for statutory services, if the child's situation does not appear to be improving or is getting worse.

8. Reporting concerns

8.1 What to do if a child or young person discloses

If a child or young person discloses information to a member of staff, they must ensure that they:

- listen to the child or young person;
- do not dismiss what the child or young person tells them. All concerns must be acted upon rigorously;
- do not promise to keep it a secret. They must explain that they have a duty to share information to keep them safe and protect them;
- write down what the child or young person tells them. This must be accurate and in the child's words;
- immediately report the concerns to the Designated Safeguarding Lead or deputy. If neither is available, the member of staff must report the information to the Head Teacher, Principal or Regional Director for Education and Care;

8.2 Staff must be alert to not just potential familial abuse, but also to children and young people making allegations against staff, volunteers or peers.

8.3 All concerns, however small or trivial they may seem, **must** be immediately reported to the Designated Safeguarding Lead. This must be done verbally and then followed up **on the same day** and documented on the electronic recording system. The member of staff has a responsibility to ensure that action has been taken with regards to the concerns on the **following day** and that the concern is documented on the electronic system. If action is not taken in a timely way as the member of staff sees fit, they have a duty to escalate their concerns to the Head Teacher or the Regional Director for Education and Care.

8.4 Staff must prioritise the child or young person's immediate safety. They must remain professional and adhere to all safeguarding and confidentiality procedures. After sharing the information with the Designated Safeguarding Lead or deputy, they must not share it with anyone else.

8.5 On receipt of the information, the Designated Safeguarding Lead must consider all information and then report this within **one working day** to the host authority, placing authority, Regional Director for Education and care and where relevant, the Local Authority Designated Officer.

9. Peer on Peer Abuse and Bullying

- 9.1 KCSIE (2020) states; ' ... abuse is abuse and should never be tolerated or passed off as "banter", "just having a laugh" or "part of growing up"'.**
- 9.2** Staff must ensure that they create a school environment where children and young people's safety is paramount and where unacceptable or unsafe behaviour will not be tolerated. Staff must be aware and alert to incidents of on line abuse, sexting, sexual violence and sexual harassment between pupils and bullying. This includes upskirting which typically involves taking a picture under a person's clothing without them knowing, with the intention of viewing their genitals or buttocks for sexual gratification, or to cause the victim humiliation, distress or alarm. Staff must be alert to possible signs of peer on peer abuse. Inappropriate language must be rigorously and consistently challenged.
- 9.3** A contextual safeguarding approach must be taken when considering possible peer on peer abuse. Children and young people who display harmful behaviours must be seen as potential victims themselves, and the wider environmental risks must be taken into account. Staff must challenge any gender bias or derogatory language used by staff or pupils. Staff must not dismiss any concerns brought to them by pupils. Staff can report concerns verbally but they must ensure that all concerns are recorded onto the schools Electronic recording system by the end of the school day.
- 9.4 Staff must act immediately and report any concerns regarding peer on peer abuse to the Designated Safeguarding Lead.**
- 9.5** When making decisions about how to deal with allegations, the age and understanding of the young person who has displayed harmful behaviour must be taken into consideration, as well as any relevant personal circumstances and how this relates to their behaviour. Schools must consider any disparity in age between the young person who has displayed harmful behaviour and the victim, the impact the behaviour has had on the victim, and any element of coercion or violence.
- 9.6 What to do if there are concerns**
Designated Safeguarding Leads must deal with any concerns of peer on peer abuse immediately and sensitively. As much information as possible must be gathered from the victim and the young person who has allegedly displayed harmful behaviour in order to gain the facts of what has happened.
- 9.7** The language used must be sensitive, non-judgemental and must not blame the victim. Victims must be supported and reassured that their safety and welfare within the school is the priority. Risk assessments must be implemented where necessary.
- 9.8** Where the Designated Safeguarding Lead believes that there has been significant harm caused to the pupil, a referral must be made to the local authority immediately. In agreement with the local authority, parents/carers must be informed. Where possible, as best practice, parents/carers are to be informed face to face.
- 9.9** If the local authority do not believe it meets their threshold for further action and the Designated Safeguarding Lead is not in agreement, this must be challenged with the local authority.
- 9.10 After the outcome/conclusion of the incident:**

- a contextual safeguarding approach must be taken;
- schools must take all necessary action to learn from the incident and prevent future incidents from occurring, such as through targeted education around specific types of peer on peer abuse;
- support for the victim must be offered and provided where possible. If necessary, appropriate risk assessments must be implemented to provide reassurance and safety for the victim;
- schools must ensure that they **do not** adopt a victim blaming approach;
- the Designated Safeguarding Lead must complete an investigation into the incident; The investigation must consider the occurrence of the incident itself as well as whether it is an isolated incident, and the personal circumstances of the young person who is alleged to have displayed harmful behaviour;
- if necessary, appropriate referrals must be made to support services for the young person who has displayed harmful behaviours;
- a risk assessment to be completed and implemented for the young person who has displayed harmful behaviours in order to safeguard them and other pupils.

9.11 Bullying

Severe or persistent forms of bullying can result in Significant Harm, which is why those providing services for children should have adequate policies, procedures and training to counter bullying. Bullying occurs when a person or group of people behave in ways which are designed to cause distress or to hurt a person or group of people. Bullying can be overt and plain for all to see. It can be subtle and insidious. Bullying can become part of the culture, recognised or believed by all or a significant number of people as 'acceptable'; it can even be encouraged and rewarded.

9.12 Outcomes First Group has a zero tolerance approach to bullying. All staff have a responsibility to challenge bullying even at a low level. Staff must help children and young people to understand what bullying is and how to report it. Bullying must be dealt with as a safeguarding matter. Staff must report any bullying concerns to the Designated Safeguarding Lead **on the same day**. The concerns must be documented appropriately.

9.13 Schools have a responsibility to ensure that those children and young people who bully, are supported and helped to understand the impact of their actions.

9.14 For further information please refer to the school's anti-bullying policy, child protection policy, the Web Filtering policy, and the DfE guidance 'Sexual violence and sexual harassment between children in schools and colleges' December 2017.

9.15 All staff have a responsibility to report any suspicions or concerns that a child has or may be mistreated or harmed.

9.16 Preventative Strategies

The school will take all appropriate action to ensure that children and young people learn about appropriate relationships with adults, keeping safe, online safety as well as sex and healthy relationships. PSHE lessons, Relationships Education, and Relationships and Sex Education will focus on important age appropriate issues in line with Government guidance. Staff must ensure that children and young people have opportunity to learn about safe relationships between peers as well as who they can talk to if they have any concerns.

9.17 Children should be supported by staff to understand what abuse is. Children must be listened to and enabled to report any abuse or neglect at the earliest opportunity. They

should be given information about how to report abuse or any concerns about possible abuse. This should include being able to access in private, relevant websites or help lines such as Childline to seek advice and help.

- 9.18** The school recognises that some children and young people are more vulnerable by virtue of their complex health or behavioural needs, or disabilities. In these instances, all staff have a responsibility to be the 'eyes and ears' and report all concerns to the Designated Safeguarding Lead.
- 9.19** For further information, refer to Part 5 of Keeping Children Safe in Education (2020) 'Child on Child Sexual Violence and Sexual Harassment'.

10. Children Missing Education

- 10.1** All staff must be aware of the risks associated with children who go missing from education, and particularly that very often missing incidents are a warning sign of other safeguarding concerns such as exploitation, forced marriage, FGM, substance misuse or mental health problems. The risk of exploitation and abuse increases for those children and young people who go missing from home and school. Early identification and intervention is a priority. Schools must have appropriate procedures in place for monitoring the attendance of children and young people in school. Children and young people's attendance must be monitored through Senior Leadership Team Meetings and Governance.
- 10.2** The Head Teacher must ensure that there are two contact numbers on a pupil's file. The Designated Safeguarding Lead must contact the main emergency contact as detailed on the pupil's file should there be concerns regarding the pupil missing education. Staff must report all unauthorised absences to the Designated Safeguarding Lead. The Designated Safeguarding Lead must make contact with the child or young person's parent/carer immediately to establish the child or young person's whereabouts. The Designated Safeguarding Lead must inform the placing authority of a pupil's poor attendance.
- 10.3** The Designated Safeguarding Lead is responsible for investigating any unexplained absences. Reasonable enquiries must be made to locate a child or young person who is missing from education. The Designated Safeguarding Lead **must** refer any safeguarding concerns regarding the absence of a pupil to the local authority. In cases where there are immediate concerns regarding forced marriage or FGM, the Designated Safeguarding Lead must refer to the police immediately. All information **must** be documented appropriately.
- 10.4** Children and young people who are repeatedly missing from education are at particular risk of harm. Attempts must be made to talk to the child or young person about why they are missing from education. Records must be kept of those discussions. Any safeguarding information which the child or young person discloses must be shared **immediately** with the local authority. If the child or young person discloses immediate safeguarding concerns, the Designated Safeguarding Lead must share this information with the police.

11. Exploitation

- 11.1** Exploitation of children and young people is a form of child abuse and can include sexual exploitation or criminal exploitation. Schools must write and implement a local exploitation procedure which staff must be familiar with.

- 11.2** All staff **must** know the definitions, signs and indicators of CSE and County Lines. Designated Safeguarding Leads must provide ongoing training and learning to staff around exploitation. All staff **must** have training in exploitation.
- 11.3** All staff **must** read Outcomes First Group's Exploitation policy as well as refer to Keeping Children Safe in Education (2020).
- 11.4** Staff **must** report concerns regarding exploitation **immediately** to the Designated Safeguarding Lead. Staff must document their concerns appropriately **on the same day**. Where there are immediate concerns relating to children and young people's safety due to exploitation, Designated Safeguarding Leads must make a same day referral to the local authority and report the concerns to the police as well as to the Regional Director for Education and Care.
- 11.5** Where there are low level concerns, Designated Safeguarding Leads must document the concerns on a chronology in order to establish a full picture of what is happening for the child or young person.
- 11.6** It is everyone's responsibility to help children and young people know about grooming and exploitation. Schools must ensure that children and young people know who to talk to if they are concerned about child exploitation.
- 11.7 Female Genital Mutilation**
In line with KCSIE (2020), teachers have a legal duty to share concerns regarding FGM; 'If a **teacher**, in the course of their work in the profession, discovers that an act of FGM appears to have been carried out on a girl under the age of 18, the teacher **must** report this to the police'.
- 11.8** Staff must read and be familiar with statutory guidance regarding reporting FGM 'FGM Fact sheet' as outlined within KCSIE 2020 page 88.
- 11.9** Teaching staff have a legal duty to share concerns with the Designated Safeguarding Lead and to report any concerns. In suspected cases of FGM, staff must refer to the local authority as well as the police. The Designated Safeguarding Lead will assist and support staff with this.
- 11.10** The Designated Safeguarding Lead must ensure that immediate concerns regarding potential abuse, harm, honour based abuse including FGM, forced marriage and breast ironing, CSE and Trafficking or Radicalisation are shared **immediately** with the relevant Regional Director for Education and Care (chair of governors) and that staff have documented them appropriately.

12. Preventing Radicalisation

- 12.1** Outcomes First Group fully recognises its responsibility to have arrangements in place to safeguard and protect children from radicalisation. Section 26 of the Counter-Terrorism and Security Act 2015 places a statutory responsibility on schools to 'have due regard to the need to prevent people from being drawn into terrorism'. This is known as the 'Prevent' duty.
- 12.2** All staff must be aware of the signs and indicators of radicalisation. Staff must be proactive in reporting any concerns, regardless of how small they may be, to the Designated

Safeguarding Lead. Designated Safeguarding Leads must assist staff to report all concerns regarding radicalisation to the Police as well as the Regional Director for Education and Care. Staff must document their concerns appropriately.

12.3 All staff must be aware of the local procedures relating to reporting radicalisation concerns.

13. Children Requiring Support with their Mental Health

13.1 Outcomes First Group recognises that schools have an important role in supporting the health and wellbeing of children and young people. Mental ill-health can be an indicator of a child suffering or at risk of abuse, neglect or exploitation. All schools should have systems in place for identifying mental health problems and referring to appropriate agencies for additional support. This will ordinarily be with the consent of the child and their family. All details of concerns and any referrals or other support arranged for the child should be documented on the schools electronic recording system.

13.2 Schools can refer to the Mental Health and Behaviour in Schools guidance (2018) <https://www.gov.uk/government/publications/mental-health-and-behaviour-in-schools--2>
The guidance provides advice on how to create a whole school culture in promoting positive Mental health outcomes for children and young people.

14. Physical Interventions

14.1 While every school creates an atmosphere of nurturing, unconditional positive regard and warmth, Outcomes First Group recognises that on occasion it may be necessary to use physical intervention to keep a child or young person safe. Physical intervention must be a last resort.

14.2 All staff must read and know the school's individual Physical Intervention Policy.

14.3 If a child or young person makes an allegation after a physical intervention, it is important that the member of staff writes down as much information as possible. Staff must complete body maps immediately after the event and make an appropriate electronic record. Staff must also verbally inform the Designated Safeguarding Lead/deputy as well as recording it onto the schools electronic recording system. **Medical attention must always be sought for the young person.** Staff must inform their parents or carers. Allegations of harm relating to physical interventions must be reported to the Regional Director for Education and Care, safeguarding@ofgl.co.uk and the Local Authority Designated Officer.

15. Allegations against Staff

15.1 Keeping Children Safe in Education (2020) considers an allegation to be any concern, complaint or disclosure that indicates a member of staff, agency staff or volunteer or has:

- Behaved in a way that has harmed a child or may have harmed a child
- Possibly committed a criminal offence against or relate to a child
- Behaved towards a child or children in a way that indicates he or she may pose a risk of harm to children; or

- Behaved or may have behaved in a way that indicates they may not be suitable to work with children.

15.2 All allegations must be treated seriously. Staff must maintain an open mind and suspend all judgement. Allegations must never be dismissed. When managing allegations, it is important that staff maintain a level of professional curiosity. Staff have a responsibility to look after themselves and not to place themselves into situations which could present as unsafe. Staff must report any concerns to the Regional Director for Education and Care and the Designated Safeguarding Lead.

15.3 When a child makes an allegation about a member of staff, the member of staff receiving the complaint must write everything down and document it on the electronic recording system used by the school. The member of staff must immediately report the allegation to the Designated Safeguarding Lead or deputy. The Designated Safeguarding Lead has a responsibility to take all allegations seriously regardless of whether a child or young person has made previous allegations. The Designated Safeguarding Officer may wish to speak with the LADO and seek advice about next steps on the same day. Allegations must be reported to the Local Authority Designated Officer within one working day. The Designated Safeguarding Lead must ensure that they follow the Outcomes First Group's Managing Allegations Procedure.

15.4 Part four of Keeping Children Safe in Education (2020) outlines the importance of retaining oversight of any concerns or allegations about agency or supply staff, volunteers or any member of staff employed by a third party working in the school setting. Whilst the individual may not be employed by Outcomes First Group, **schools must ensure** that allegations are managed properly. KCSIE (2020) states *'In no circumstances should a school or college decide to cease to use a supply teacher due to safeguarding concerns, without finding out the facts and liaising with the Local Authority Designated Officer (LADO) to determine a suitable outcome. Governing bodies should discuss with the agency whether it is appropriate to suspend the supply teacher or redeploy them to another part of the school whilst they carry out their investigation.'*

15.5 If the allegation is regarding the Head Teacher/Principal then the Regional Director for Education and Care must be informed immediately. They will then seek advice from the LADO.

15.6 **All allegations made against staff must be reported to the Regional Director for Education and Care and HR and the Group Head of Safeguarding via safeguarding@ofgl.co.uk . Outcomes First Group recognises that managing allegations can be challenging and so will support with the process.**

15.7 It is the responsibility of the Designated Safeguarding Lead to ensure that all allegations are managed in line with local safeguarding partnership procedures.

16. Working with the Local Authority Designated Officer

16.1 In all referrals, the Designated Safeguarding Lead is the lead professional within the school for ensuring that a timely response is received from the local authority or LADO. If a response is received which the Designated Safeguarding Lead believes is inappropriate and does not prioritise the child or young person's safety, this must be escalated to the Head Teacher or Governors of the school to agree further action.

17. Whistleblowing

- 17.1** Safeguarding is everyone's responsibility. Outcomes First Group recognises that on occasion staff may feel that they are unable to tell someone within their immediate place of work about any safeguarding concerns that they may have. Outcomes First group also recognises that children will be unable to voice their concerns if they are in an environment where staff also fail to voice their concerns.
- 17.2** All staff have a duty first and foremost to the children in their school. Any concerns, regardless of how small they may seem, must be reported. Designated Safeguarding Leads and Head Teachers have a responsibility to ensure that they create an environment where staff feel safe to openly voice any concerns and that they feel listened to. It is also important that staff feel supported if concerns are raised about them. If staff see or heard about other colleagues practice which they are concerned about, which potentially may cause emotional or physical harm to a pupil, or if the standard of care being provided falls short of expectations, they must report this.
- 17.3** Outcomes First group has an anonymous telephone support system (Safecall) where staff are able to share any concerns that they may have, safely and without fear of reprisal. All whistleblowing concerns will be taken seriously and treated as such.
- 17.4** Staff can call Safecall on **08009151571**, report online **www.safecall.co.uk/reports**, or email **outcomesfirstgroup@safecall.co.uk**

18. The role of Senior Manager and Governor

- 18.1** Like teaching staff and volunteers, senior managers and Governors must be safely recruited and have all relevant checks on file. Please see the Safer Recruitment policy for further information.
- 18.2** Governors must have oversight of safeguarding policies and procedures that they are being effectively implemented within the school and that training is effective. In line with KCSIE (2020), which states that; '*Governing bodies and proprietors should have a senior board level (or equivalent) lead to take **leadership** responsibility for their schools or college's safeguarding arrangements*'. The named Governor for the school is James Joyce
- 18.3** It is the Governors' responsibility to ensure that there is a named Designated Safeguarding Lead and that the school contributes to multi-agency working in line with Working Together to Safeguard Children (2018).

19. Safer Recruitment

- 19.1** The Outcomes First Group Safer Recruitment Policy sets the processes which must be followed for the recruitment of staff and volunteers.
- 19.2** It is the responsibility of the Head Teacher to ensure that the Single Central Record is compliant with legislation and statutory guidance and kept up to date and is stored confidentially.

20 Managing Referrals to Disclosure and Barring Service, Social Work England, or other professional bodies including the Care Council for Wales (CCW), and/or the Scottish Social Services Council (SSSC), Northern Ireland Social Care Council (NISCC) or Teacher Regulation Authority.

- 20.1** A Sub-Committee of the Outcomes First Group Safeguarding & Quality Committee takes an overview of all professional conduct issues to ensure the Group is compliant and consistent with all legal duties relating to referrals to professional bodies and the Disclosure and Barring Service.
- 20.2** Outcomes First Group managers must notify the Safeguarding Sub-Committee of all Referrals and potential referrals to the Disclosure and Barring Service or any relevant professional body in the UK.
- 20.3** All professional conduct issues which may require a referral to a professional body, whether they relate to safeguarding children or not, must be referred to this sub-committee. For example, a teacher may be prohibited from teaching for a wide range of reasons which do not relate to the safety of children or young people.
- 20.4** The Safeguarding Sub-Committee will support the decision-making process to refer an employee to a professional body / DBS and make it clear who is responsible for the submission of any relevant documentation. This will normally be delegated to a senior manager within the division.

Author	Nicola Thomas
Document Title	Safeguarding and Child Protection
Date Reviewed	August 2020 (Updated January 2021)
Next Review Date	August 2021